

Cancer Research Reagents

Curating a portfolio of **best-in-class brands**, Vector Laboratories delivers a **comprehensive range of antibody products**, services, and expertise for research, diagnostic, and therapeutic applications. We empower cancer researchers worldwide with a broad selection of high-quality antibodies, cell lines, and reagents.

Recombinant Engineered Antibodies

Our Absolute Antibody brand specializes in recombinant antibodies, which ensure batch-to-batch reproducibility and enable new antibody engineering opportunities.

Immunotherapy Antibodies

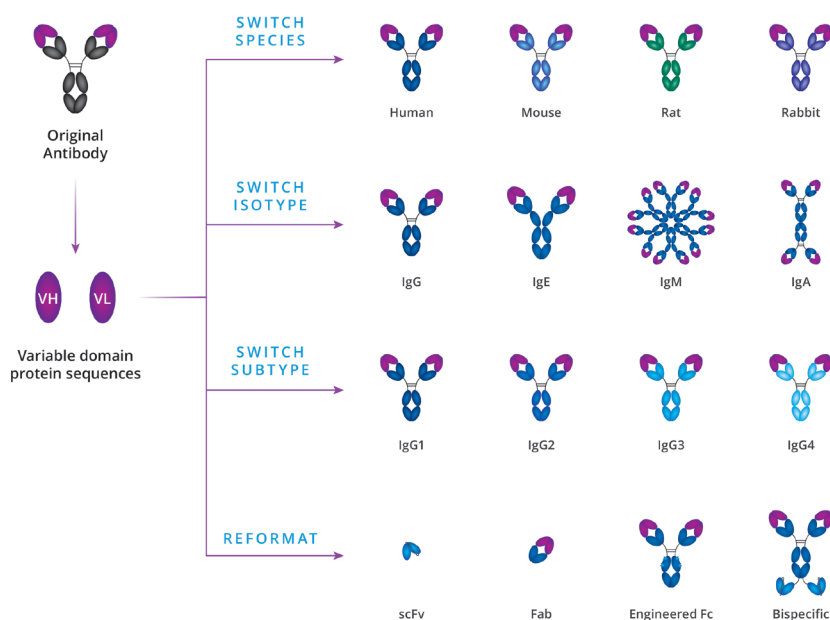
Clinically relevant targets, including mouse-anti-mouse antibodies that offer reduced immunogenicity and tailored effector function

Research-Grade Biosimilars

Research tools that remove the need to source costly therapeutic-grade biologics, available with different constant domains

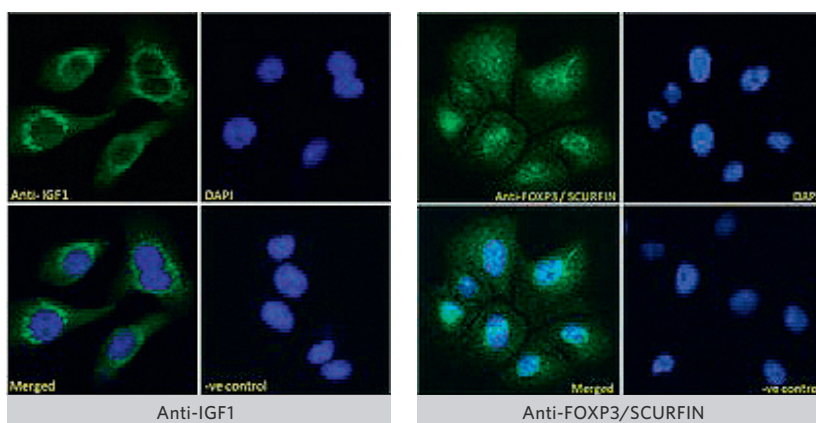
Tumor Marker Antigens

Antibodies targeting tumor associated antigens and tumor specific antigens



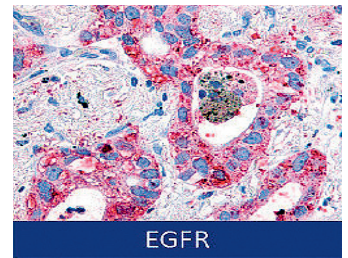
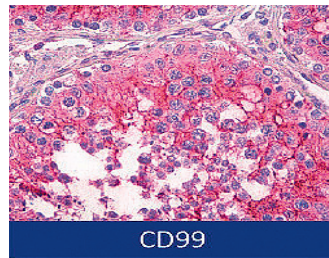
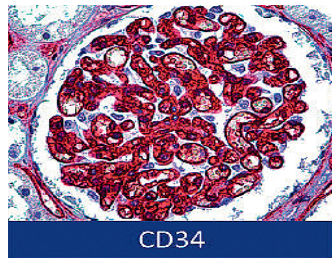
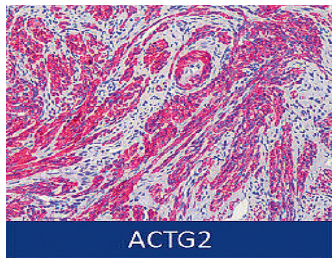
Goat Polyclonal Antibodies

Our Everest brand specializes in anti-peptide and antigen affinity purified goat polyclonal antibodies. The catalog contains thousands of goat antibodies against a broad range of human, mouse and rat proteins of biomedical interest. Top cancer products include Anti-IGF1 Antibody, Anti-FOXP3 / SCURFIN Antibody and Anti-CEP290 Antibody.



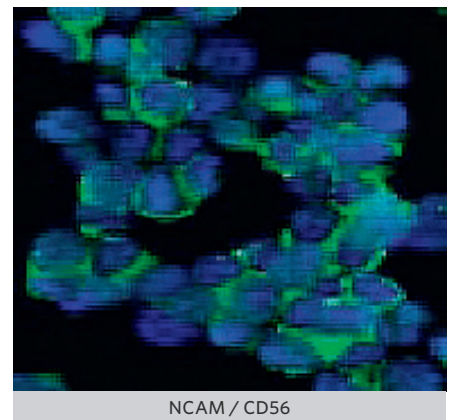
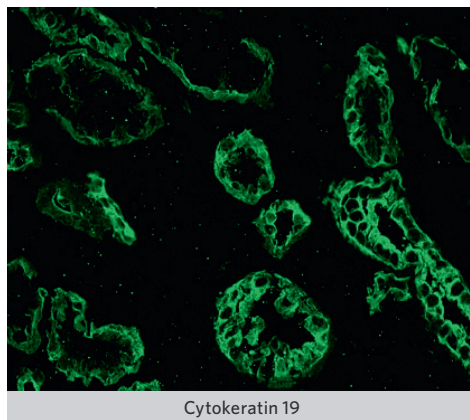
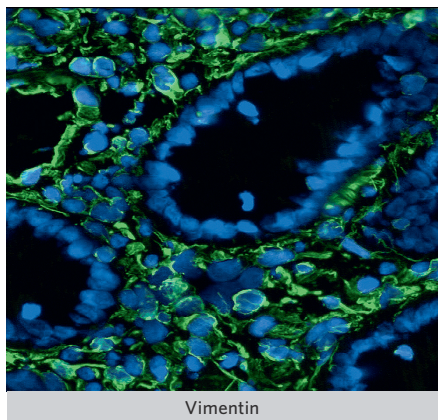
Immunohistochemistry-Validated Antibodies

Our LSBio brand specializes in IHC validation, offering more than 15,000 antibodies validated for immunohistochemistry with a focus on cancer biomarkers. The IHC-Plus™ antibodies have been rigorously tested to deliver optimal performance in immunohistochemistry (IHC) studies on formalin-fixed paraffin-embedded (FFPE) human tissues. The PathPlus™ antibodies represent the highest quality reagents available for research pathology applications, shown to be the best performing reagents for immunohistochemical detection of high-value cancer targets.



Other Cancer Research Reagents

Our Exalpha and Nordic-MUBio brands offer a variety of high quality monoclonal antibodies for cancer research. Key targets include vimentin, cytokeratin, episialin, neu-oncogen (C-erb B2), NCAM/CD56, p63 protein, and the cell cycle marker Ki-67.



Our Kerafast brand makes unique laboratory-made research tools easily accessible to the global scientific community. The catalog includes various cancer cell lines, including MC-38 murine colon adenocarcinoma cell lines, mouse oral squamous cell carcinoma cell lines, a human pancreatic duct epithelial cell line, and a full range of canine cancer cell lines

Your Swiss Distributor:



lucerna-chem.ch
info@lucerna-chem.ch
+41 41 420 96 36
Lucerna-Chem AG, Abendweg 18, CH-6006 Luzern